

ACCUEVERGY

AcuCT 5A Series

5A Split-Core Current Transformer

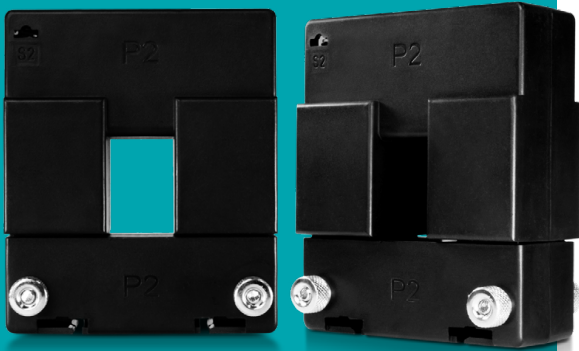


D A T A S H E E T

AcuCT 5A Series

AcuCT-0812

5A Split-Core Current Transformer Datasheet



The AcuCT 5A Series is a rugged, compact split-core current transformer designed with an either 1A or 5A industrial output. Choose from multiple sizes & input ranges to adapt to a variety of special project requirements. The helpful split-core design is easy to install and does not require disconnection of cables or wires.

Features

- Revenue grade accuracy: IEC 61869-2 Class 0.5s (from 5% - 120% of rated current)
- Choose from 1A or 5A industrial standard output
- Split-Core design streamlines installation
- Included accessories provide multiple mounting options
- UL Recognized



Accuenergy Inc.

Los Angeles - Toronto - Pretoria

North America Toll Free: 1-877-721-8908

Web: www.accuenergy.com

Email: marketing@accuenergy.com



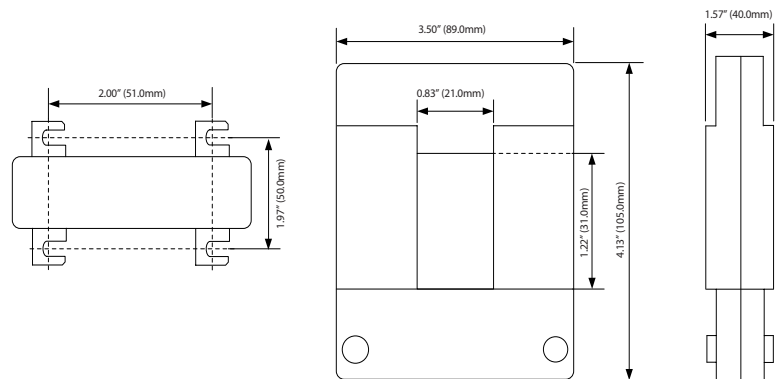
Revision Date: August 2023 Version: 1.0.2
Specs Subject To Change Without Notice.



Specifications

RATED CURRENT	
Rated Current	100A, 150A, 200A, 250A, 300A, 400A
Current Range	5% - 120% of rated current
Output	5A, 1A
Accuracy	IEC 61869-2 Class 0.5s
MECHANICAL/ENVIRONMENTAL	
Form Factor	Split-Core CT
Window Size	21.0mm x 31.0mm (0.83" x 1.22")
Exterior Dimensions	89.0mm x 105.0mm x 40.0mm 3.50" x 4.13" x 1.57"
Case Material	UL 94V-0 rated flame retardant
Lead Wires	Terminal Output
Operating Temperature	-15°C to 60°C / 5°F to 140°F
Operating Humidity	Non-condensing, 0 to 95% RH
Installation Conditions	Indoor Use
ELECTRICAL	
Wire Polarity	Terminal Output
Phase Orientation	Arrow Points Towards Load
Frequency Range	50-400Hz
Burden	100A: 1.5VA / 150A: 1.5VA / 200A: 1.5VA / 250A: 1.5VA / 300A: 2.5VA / 400A: 2.5VA
SAFETY/COMPLIANCE	
Withstand Voltage	3.0KV/1mA/1min
Rated Voltage	600VAC
Certifications	CE, RoHS, cURus (E359521)

Dimensions



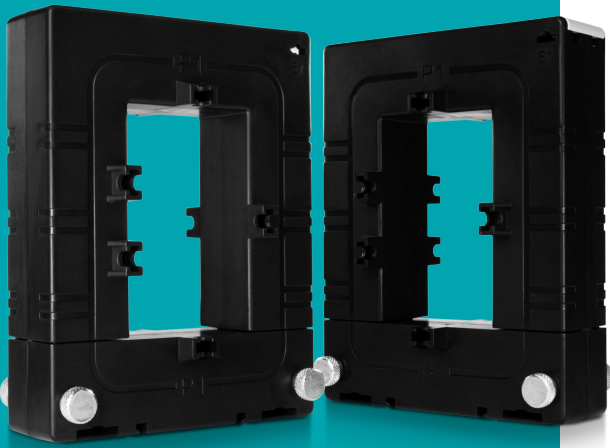
Ordering Information

	Rated Input	Rated Output
Ordering Number	AcuCT- 0812 -	:
Ordering Example	AcuCT- 0812 - 200	: 5
	100: 100A	5: 5A
	200: 200A	1: 1A
	250: 250A	
	300: 300A	
	400: 400A	

AcuCT 5A Series

AcuCT-2031

5A Split-Core Current Transformer Datasheet



The AcuCT 5A Series is a rugged, compact split-core current transformer designed with either a 1A or 5A industrial output. Choose from multiple sizes & input ranges to adapt to a variety of special project requirements. The helpful split-core design is easy to install and does not require disconnection of cables or wires.

Features

- Revenue grade accuracy: IEC 61869-2 Class 0.5s (from 5% - 120% of rated current)
- Choose from 1A or 5A industrial standard output
- Split-Core design streamlines installation
- Included accessories provide multiple mounting options
- UL Recognized



Accuenergy Inc.

Los Angeles - Toronto - Pretoria

North America Toll Free: 1-877-721-8908

Web: www.accuenergy.com

Email: marketing@accuenergy.com

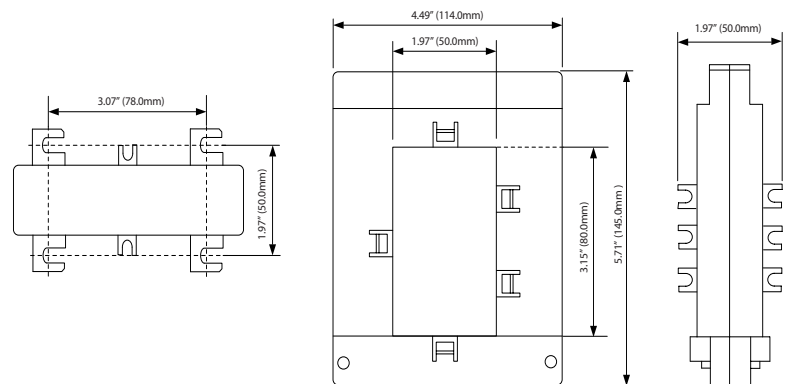
Revision Date: August 2023 Version: 1.0.2
Specs Subject To Change Without Notice.



Specifications

RATED CURRENT	
Current Range	400A, 600A, 800A, 1000A
Output	5% - 120% of rated current
Output	5A, 1A
Accuracy	IEC 61869-2 Class 0.5s
MECHANICAL/ENVIRONMENTAL	
Form Factor	Split-Core CT
Window Size	50.0mm x 80.0mm (1.97" x 3.15")
Exterior Dimensions	114.0mm x 145.0mm x 50.0mm 4.49" x 5.71" x 1.97"
Case Material	UL 94V-0 rated flame retardant
Lead Wires	Terminal Output
Operating Temperature	-15°C to 60°C / 5°F to 140°F
Operating Humidity	Non-condensing, 0 to 95% RH
Installation Conditions	Indoor Use
ELECTRICAL	
Wire Polarity	Terminal Output
Phase Orientation	Arrow Points Towards Load
Frequency Range	50-400Hz
Burden	400A: 2.5VA / 600A: 2.5VA / 800A: 5VA / 1000A: 5VA
SAFETY/COMPLIANCE	
Withstand Voltage	3.0KV/1mA/1min
Rated Voltage	600VAC
Certifications	CE, RoHS, cURus (E359521)

Dimensions



Ordering Information

		Rated Input	Rated Output
Ordering Number	AcuCT- 2031	-	:
Ordering Example	AcuCT- 2031	- 600	: 5
		400: 400A	5: 5A
		600: 600A	1: 1A
		800: 800A	
		1000: 1000A	

AcuCT 5A Series

AcuCT-3147

5A Split-Core Current Transformer Datasheet



The AcuCT 5A Series is a rugged, compact split-core current transformer designed with an either 1A or 5A industrial output. Choose from multiple sizes & input ranges to adapt to a variety of special project requirements. The helpful split-core design is easy to install and does not require disconnection of cables or wires.

Features

- Revenue grade accuracy: IEC 61869-2 Class 0.5s (from 5% - 120% of rated current)
- Choose from 1A or 5A industrial standard output
- Split-Core design streamlines installation
- Included accessories provide multiple mounting options
- UL Recognized



Accuenergy Inc.

Los Angeles - Toronto - Pretoria
 North America Toll Free: 1-877-721-8908
 Web: www.accuenergy.com
 Email: marketing@accuenergy.com



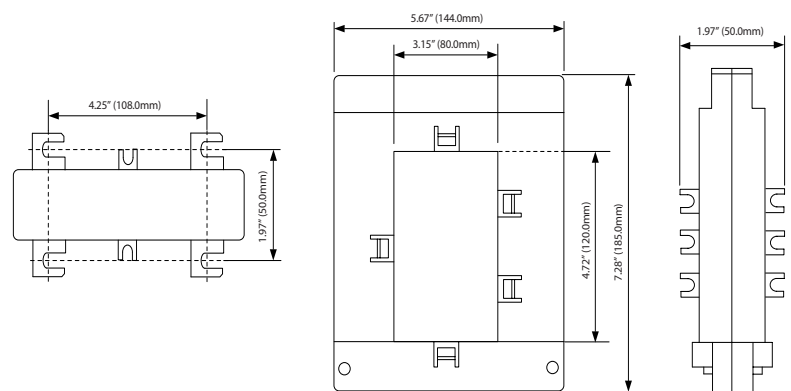
Revision Date: August 2023 Version: 1.0.2
 Specs Subject To Change Without Notice.



Specifications

RATED CURRENT	
Current Range	1000A, 1200A, 1600A
Output	5% - 120% of rated current
Output	5A, 1A
Accuracy	IEC 61869-2 Class 0.5s
MECHANICAL/ENVIRONMENTAL	
Form Factor	Split-Core CT
Window Size	80.0mm x 120.0mm (3.15" x 4.72")
Exterior Dimensions	144.0mm x 185.0mm x 50.0mm 5.67" x 7.28" x 1.97"
Case Material	UL 94V-0 rated flame retardant
Lead Wires	Terminal Output
Operating Temperature	-15°C to 60°C / 5°F to 140°F
Operating Humidity	Non-condensing, 0 to 95% RH
Installation Conditions	Indoor Use
ELECTRICAL	
Wire Polarity	Terminal Output
Phase Orientation	Arrow Points Towards Load
Frequency Range	50-400Hz
Burden	1000A: 15VA / 1200A: 15VA / 1600A: 7.5VA
SAFETY/COMPLIANCE	
Withstand Voltage	3.0KV/1mA/1min
Rated Voltage	600VAC
Certifications	CE, RoHS, cURus (E359521)

Dimensions



Ordering Information

		Rated Input	Rated Output
Ordering Number	AcuCT- 3147	-	:
Ordering Example	AcuCT-3147	- 1600	: 5
		1000: 1000A	5: 5A
		1200: 1200A	1: 1A
		1600: 1600A	

AcuCT 5A Series

AcuCT-3163

5A Split-Core Current Transformer Datasheet



The AcuCT 5A Series is a rugged, compact split-core current transformer designed with an either 1A or 5A industrial output. Choose from multiple sizes & input ranges to adapt to a variety of special project requirements. The helpful split-core design is easy to install and does not require disconnection of cables or wires.

Features

- Revenue grade accuracy: IEC 61869-2 Class 0.5s (from 5% - 120% of rated current)
- Choose from 1A or 5A industrial standard output
- Split-Core design streamlines installation
- Included accessories provide multiple mounting options
- UL Recognized



Accuenergy Inc.

Los Angeles - Toronto - Pretoria
 North America Toll Free: 1-877-721-8908
 Web: www.accuenergy.com
 Email: marketing@accuenergy.com



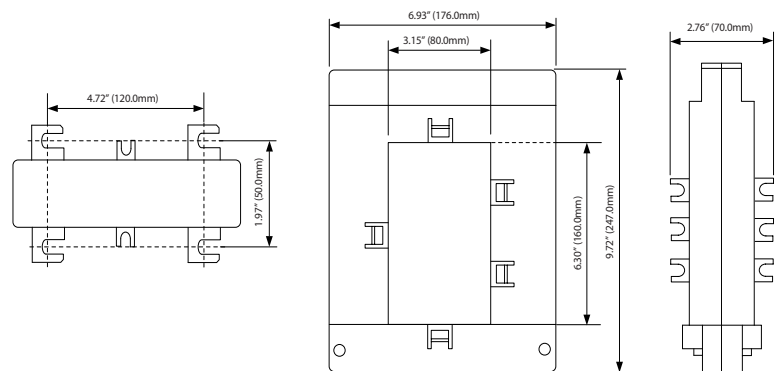
Revision Date: August 2023 Version: 1.0.2
 Specs Subject To Change Without Notice.



Specifications

RATED CURRENT	2000A, 2500A, 3000A, 4000A, 5000A
Current Range	5% - 120% of rated current
Output	5A, 1A
Accuracy	IEC 61869-2 Class 0.5s
MECHANICAL/ENVIRONMENTAL	
Form Factor	Split-Core CT
Window Size	80.0mm x 160.0mm (3.15" x 6.30")
Exterior Dimensions	176.0mm x 247.0mm x 70.0mm 6.93" x 9.72" x 2.76"
Case Material	UL 94V-0 rated flame retardant
Lead Wires	Terminal Output
Operating Temperature	-15°C to 60°C / 5°F to 140°F
Operating Humidity	Non-condensing, 0 to 95% RH
Installation Conditions	Indoor Use
ELECTRICAL	
Wire Polarity	Terminal Output
Phase Orientation	Arrow Points Towards Load
Frequency Range	50-400Hz
Burden	2000A: 5VA / 2500A: 15VA / 3000A: 15VA / 4000A: 15VA / 5000A: 15VA
SAFETY/COMPLIANCE	
Withstand Voltage	3.0KV/1mA/1min
Rated Voltage	600VAC
Certifications	CE, RoHS, cURus (E359521)

Dimensions



Ordering Information

		Rated Input	Rated Output
Ordering Number	AcuCT- 3163	-	:
Ordering Example	AcuCT- 3163	- 2500	: 5
		2000: 2000A	5: 5A
		2500: 2500A	1: 1A
		3000: 3000A	
		4000: 4000A	
		5000: 5000A	